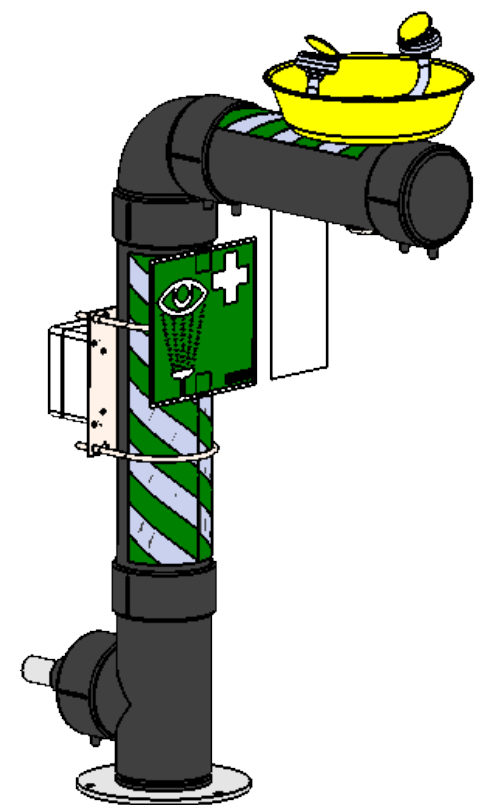
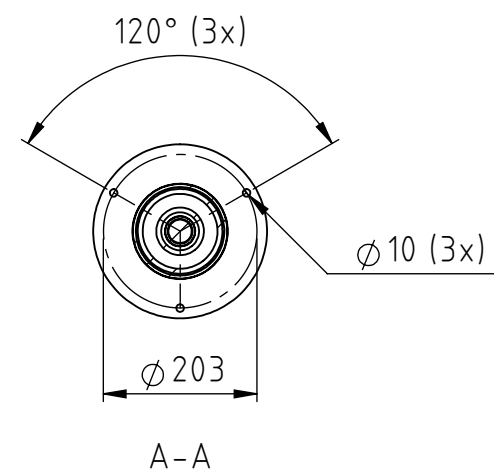
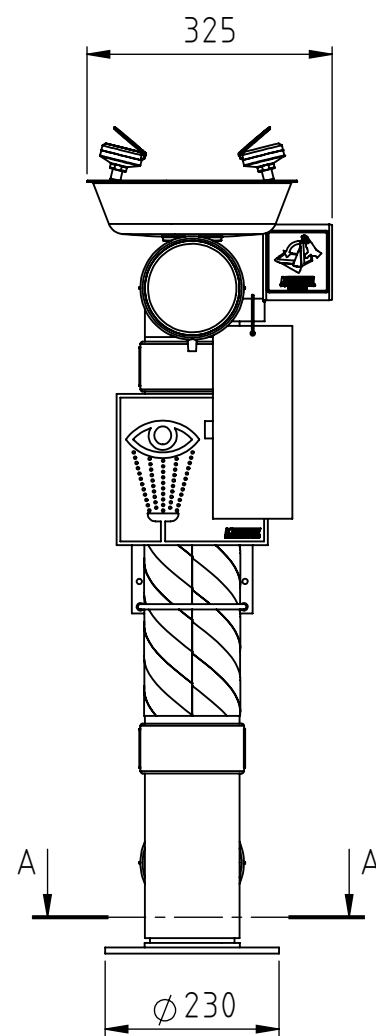
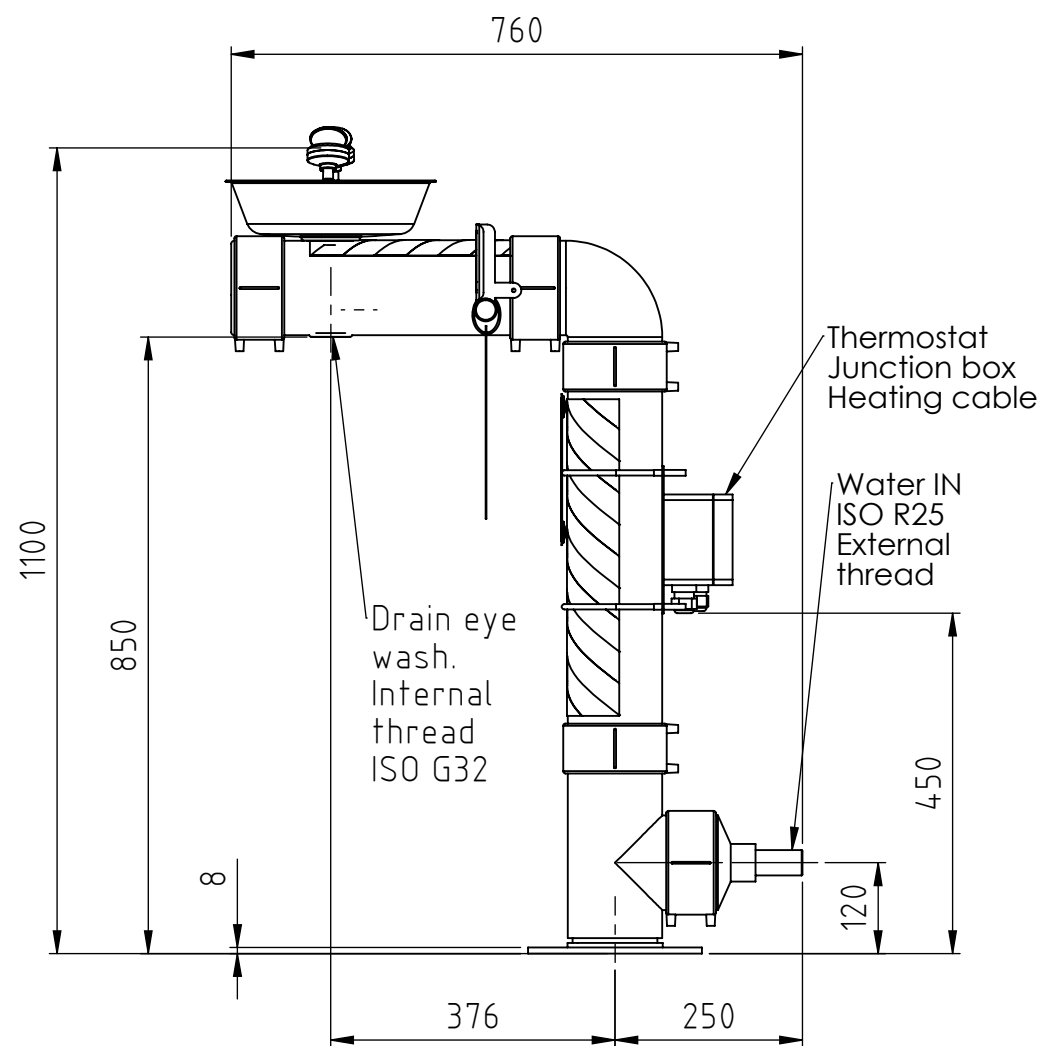


This document must not be copied without our written permission, and the contents thereof must not be imparted to a third party nor be used for any unauthorized purpose. Contravention will be prosecuted.



General information:
Power consumption 230VAC, 50Hz, 6A

4	2	KND508	Filter to spray head, 14 litres/minute
3	2	KND507	Spray head, 14 litres/minute
2	1	KND549	Control card
1	1	KND545	Emergency sign, eye wash
Pos	Quantity	Order number	Description
Owner		Prepared by	Approved by
MM		DK	
Date		2018-04-11	Scale
1:10			
Title		Eye wash station 3894	
Insulated and heated eye wash		Drawing No.	
Installation drawing		R3894	
Rev.		Sheet	
2		1 (1)	

Revision Notice:
*This drawing is not the latest version for the product.
Minor component modifications are forthcoming,
but user impact will be negligible.
Updated drawings expected in November 2023.*

2	Drawing updated	2019-05-22	MM
Rev.	Description	Date	Sign.