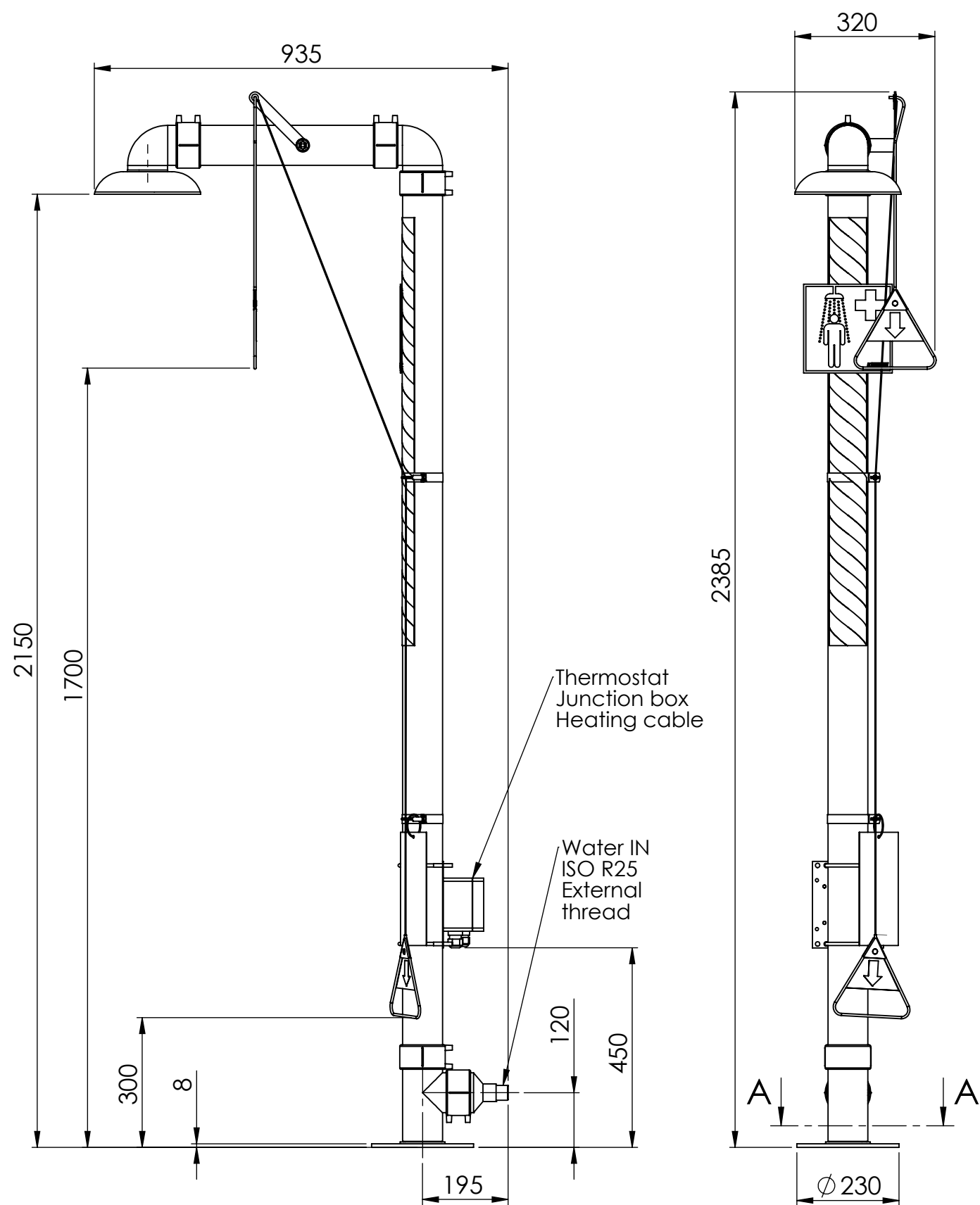
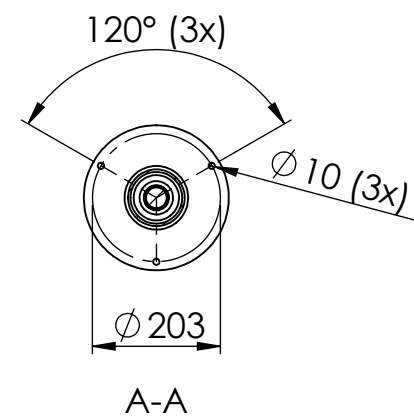


This document must not be copied without our written permission, and the contents thereof must not be imparted to a third party nor be used for any unauthorized purpose. Contravention will be prosecuted.

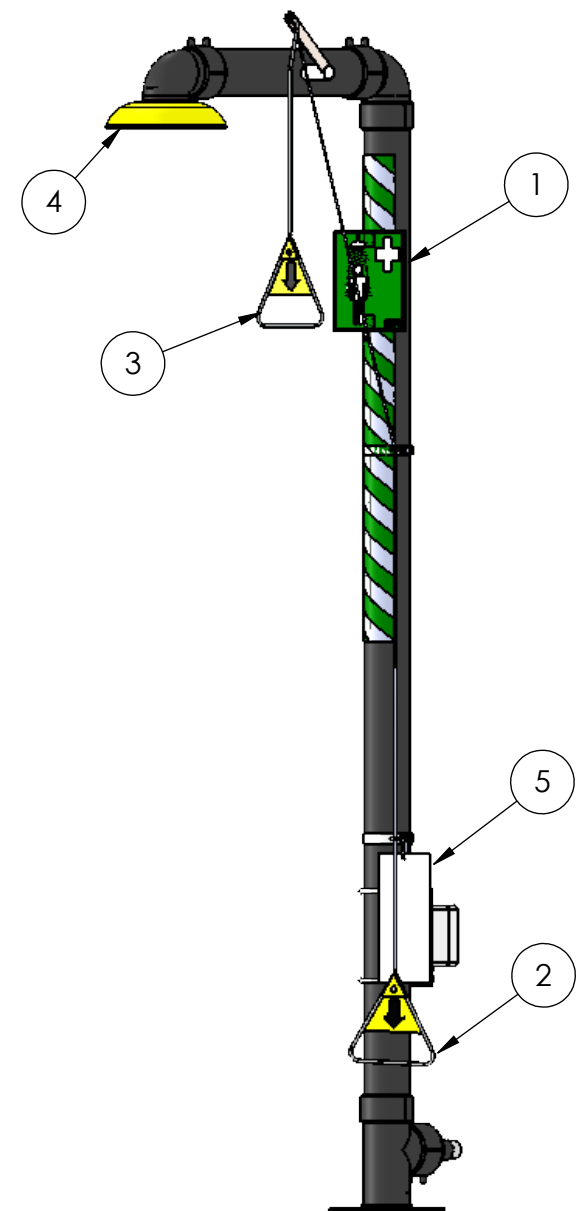
1	Updated drawing template	2019-06-26	MM
Rev.	Description	Date	Sign.



Revision Notice:
This drawing is not the latest version for the product.
Minor component modifications are forthcoming,
but user impact will be negligible.
Updated drawings expected in November 2023.



General information:
Power consumption 230 VAC, 50Hz, 6A



5	1	KND549	Control card
4	1	KND530	Shower head, stainless steel
3	1	KND532	Pull rod, stainless steel
2	1	KND540-100	Pull rod for disabled person
1	1	KND547	Emergency sign, shower
Pos	Quantity	Order number	Description
Owner		Prepared by	Approved by
MM		DK	
Date		2019-06-26	Scale
			1:12
Title		Emergency shower 3892	
Insulated and heated emergency shower		Drawing No.	
Installation drawing		R3892	
Rev.		Sheet	
1		1 (1)	