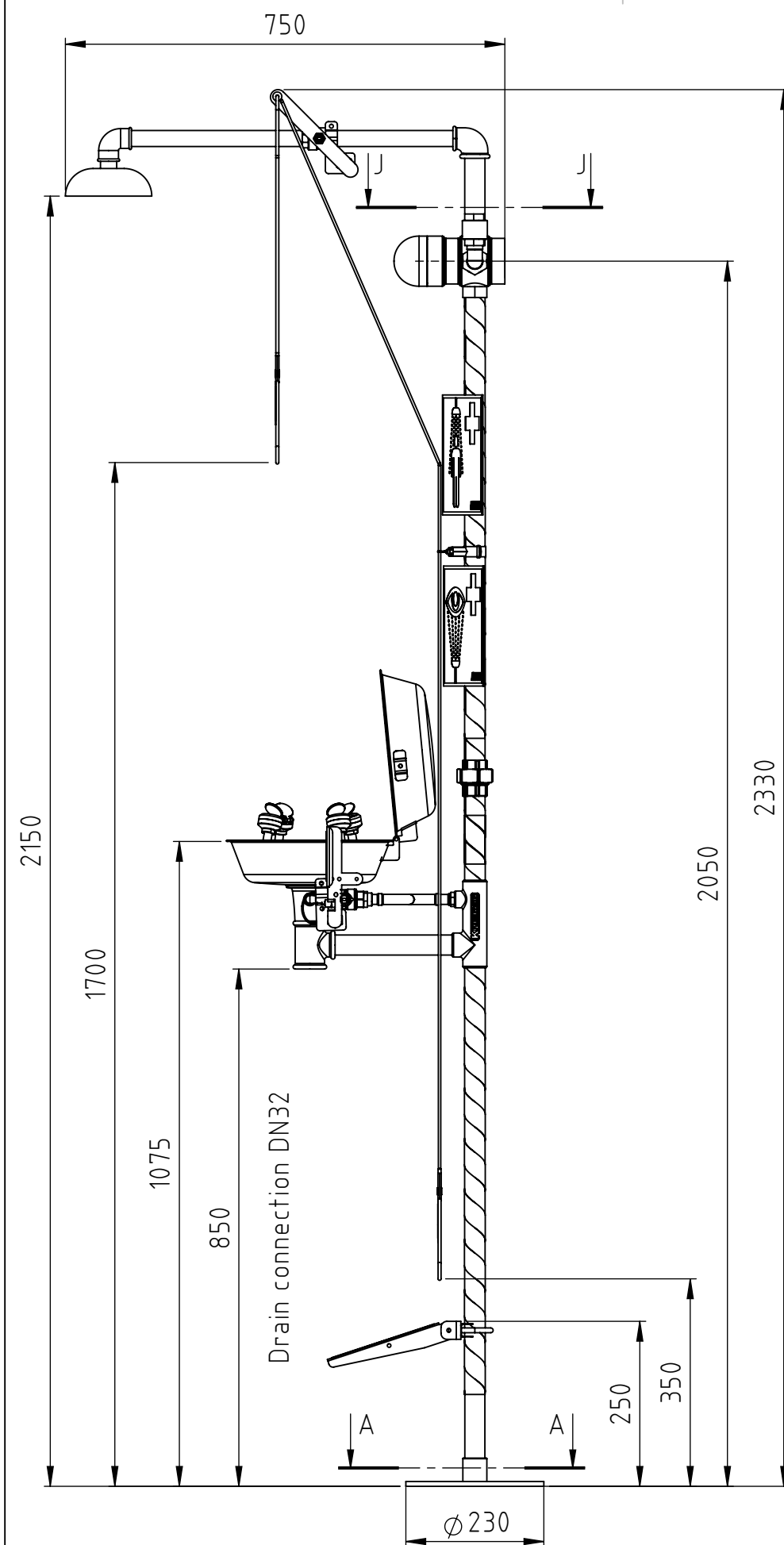
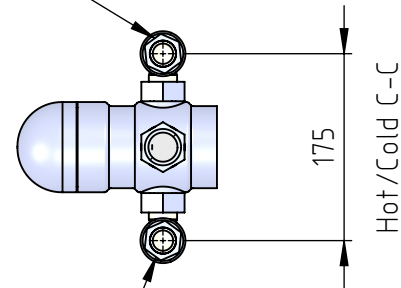


This document must not be copied without our written permission, and the contents thereof must not be imparted to a third party nor be used for any unauthorized purpose. Contravention will be prosecuted.



Hot water IN
G3/4" female
thread

Note: Elbow angle may be adjusted
to fit site requirements.



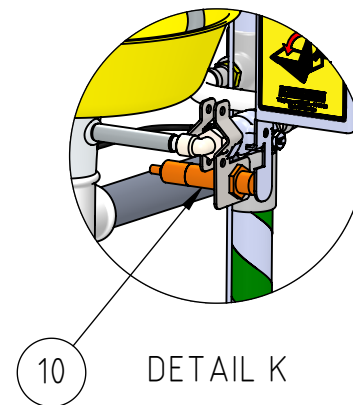
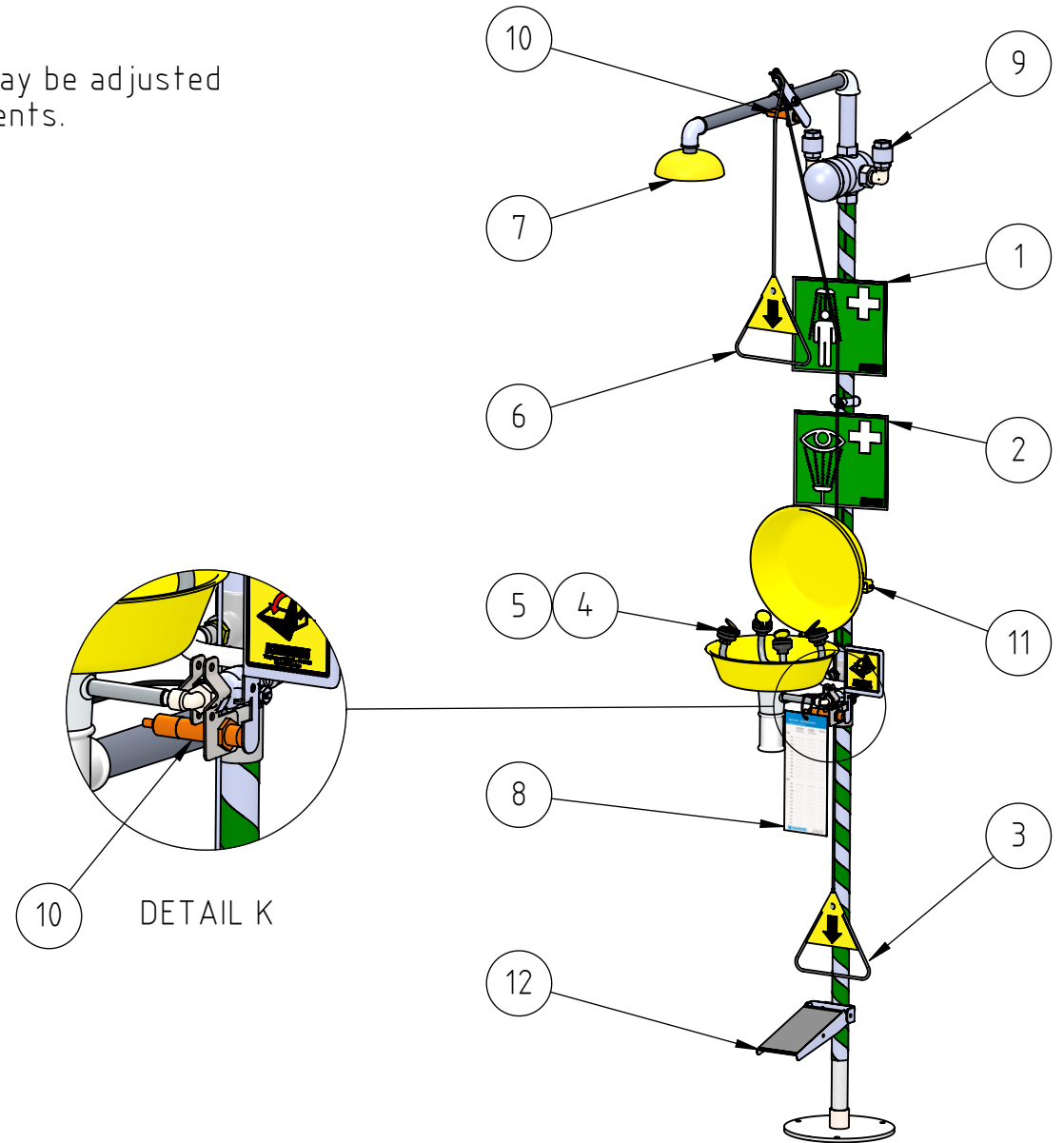
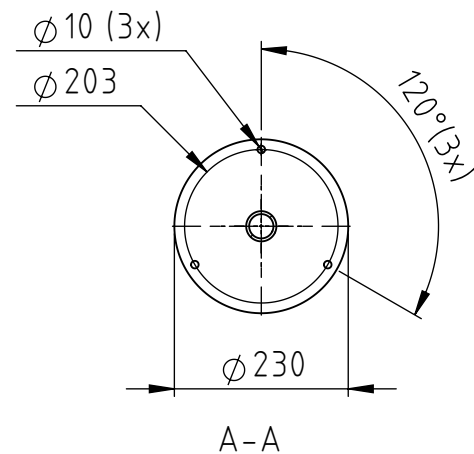
Cold water IN
G3/4" female
thread

J-J

Revision Notice:
This drawing is not the latest version for the product.
Minor component modifications are forthcoming,
but user impact will be negligible.
Updated drawings expected in November 2023.

Optional fittings:

More accessories and
customization options on request



12	1	KND570	Foot pedal for eyewash activation
11	1	Eyewash lid	Included with model 3882
10	2	Inductive sensor	Sensor for signaling usage, for alarms and/or DCS signal.
9	1	RSK 8213845	Mixing valve with check valves - 90L/min
8	1	KND549	Control card
7	1	KND531	Shower head 76 litres/minute, stainless steel
6	1	KND532	Pull rod, stainless steel
5	4	KND506	Filter to spray head, 7 litres/minute
4	4	KND505	Spray head, 7 litres/minute
3	1	KND540-101	Pull rod for disabled person
2	1	KND545	Emergency sign, eye wash
1	1	KND547	Emergency sign, shower
Pos	Quantity	Order number	Description
Owner		Prepared by	Approved by
JB		TM	Date
2022-06-16		Scale	1:10
Title		Drawing No.	
Combination Shower		R3882/3883	
RSK 821 3882/3883		Rev.	
Also applicable for -00 "Stainless steel models"		Sheet	
Installation drawing		1 (1)	