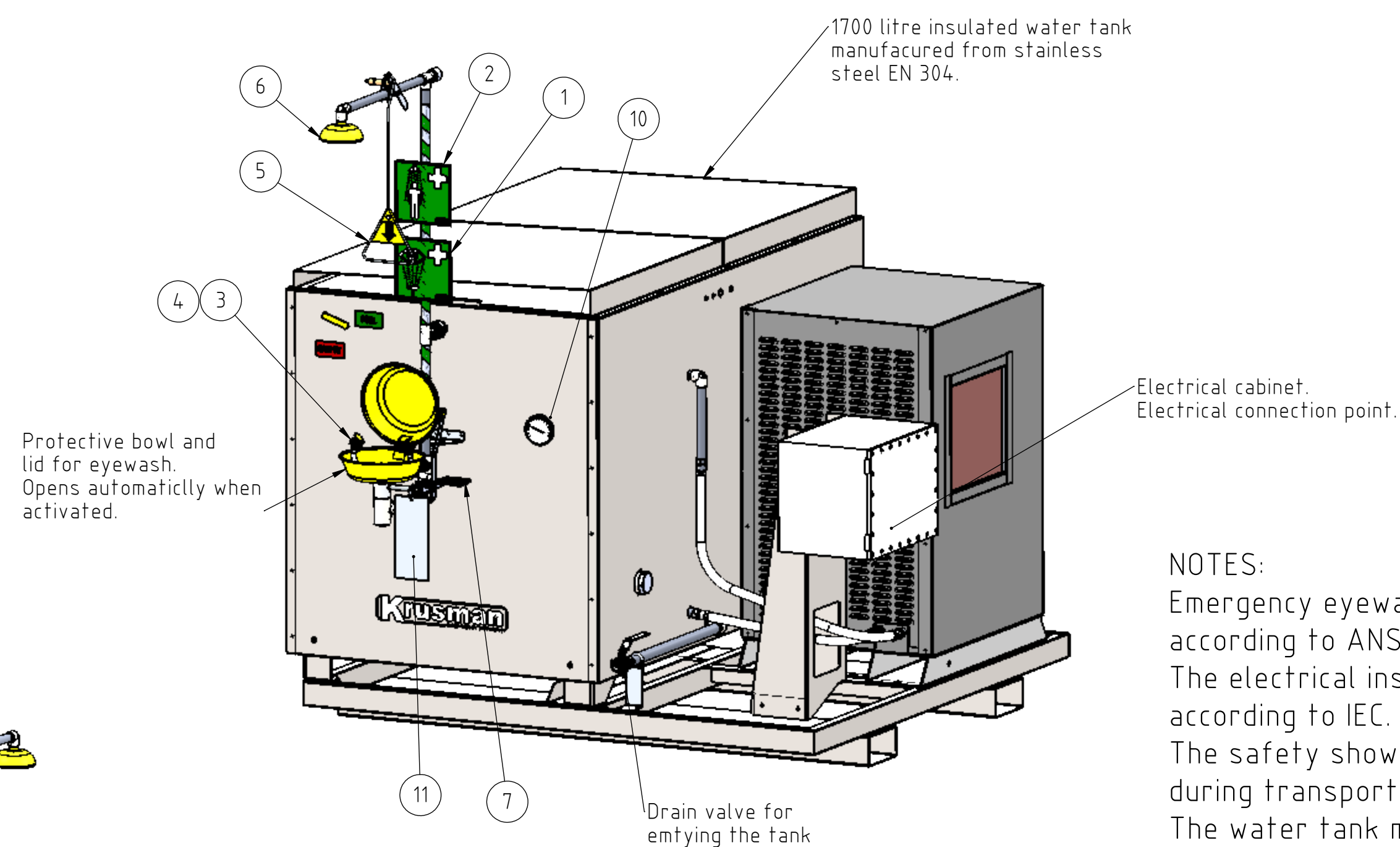
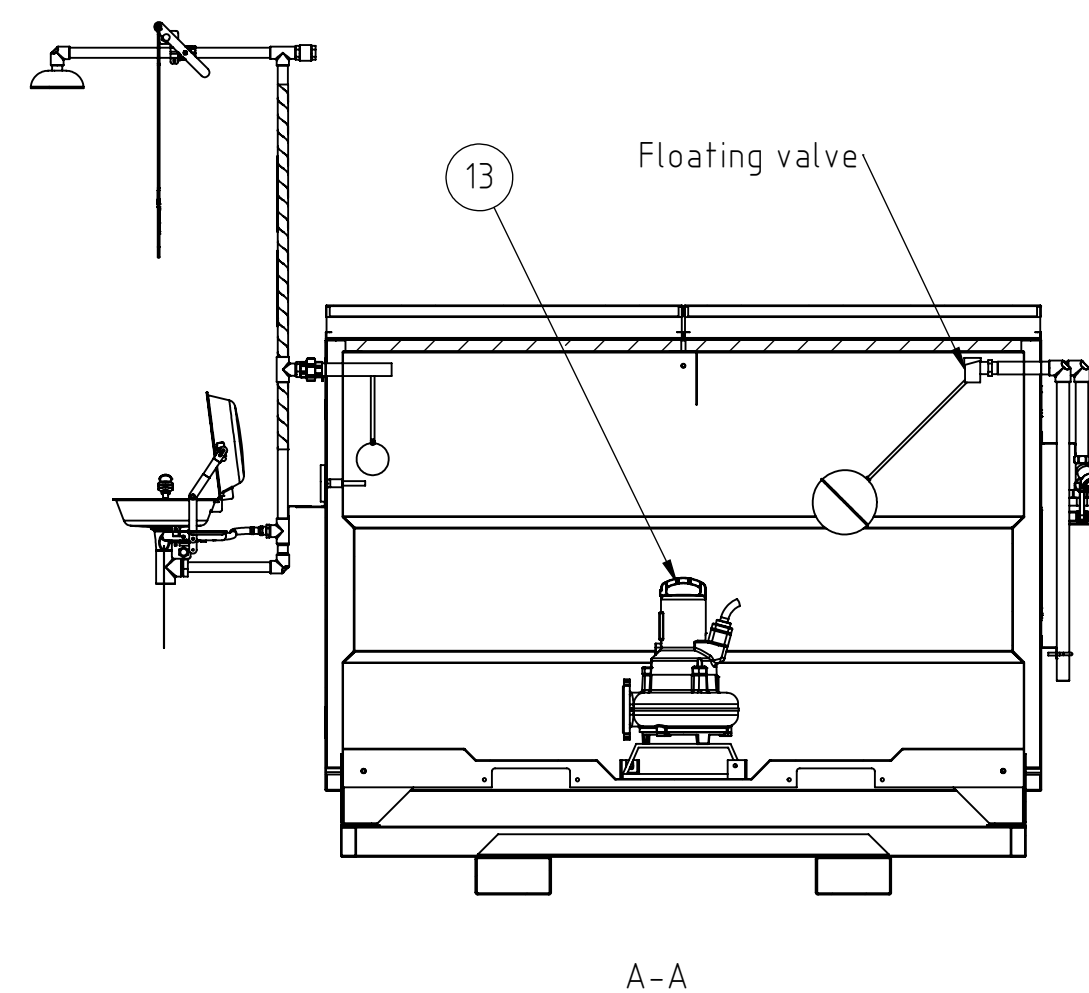
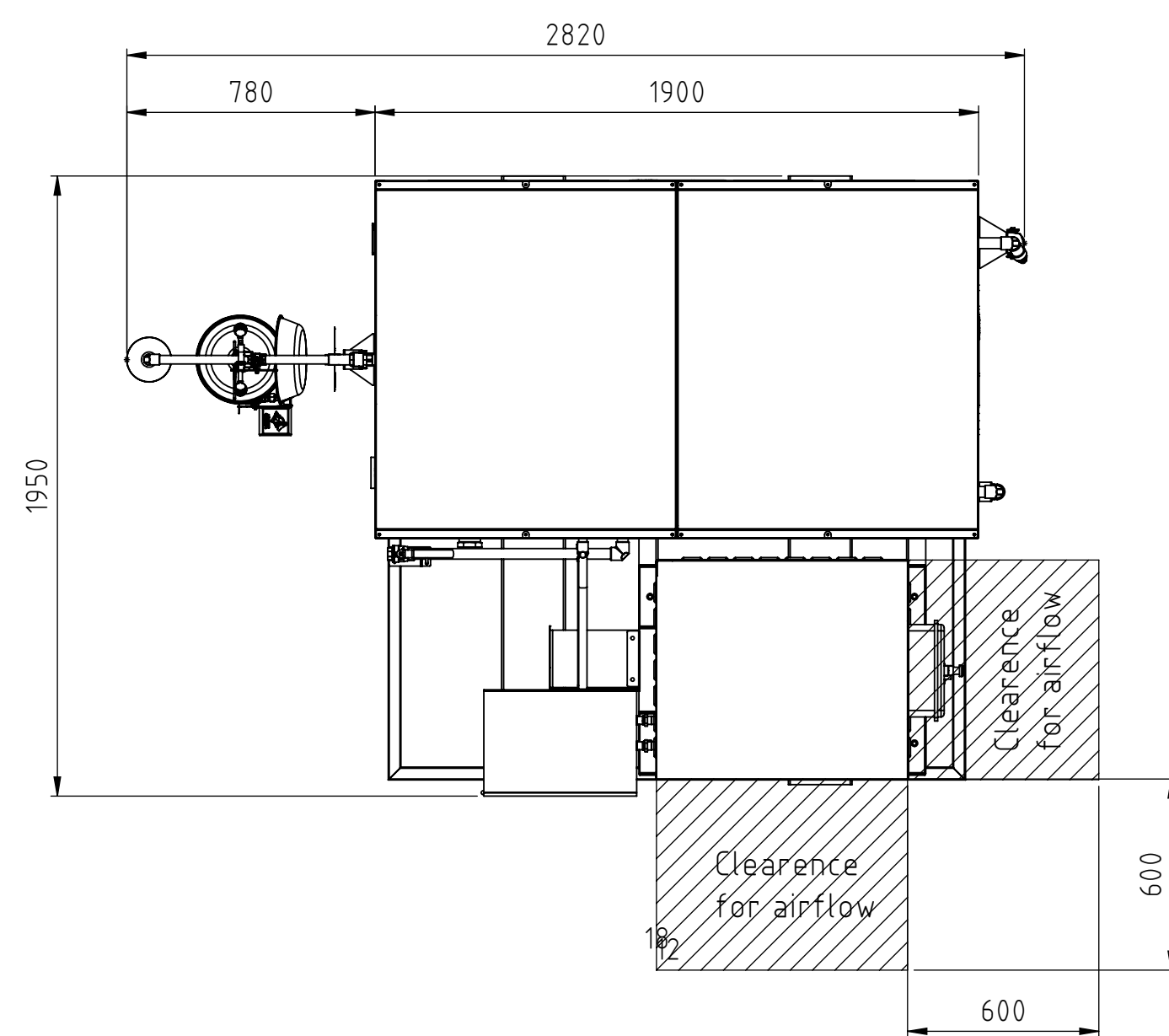
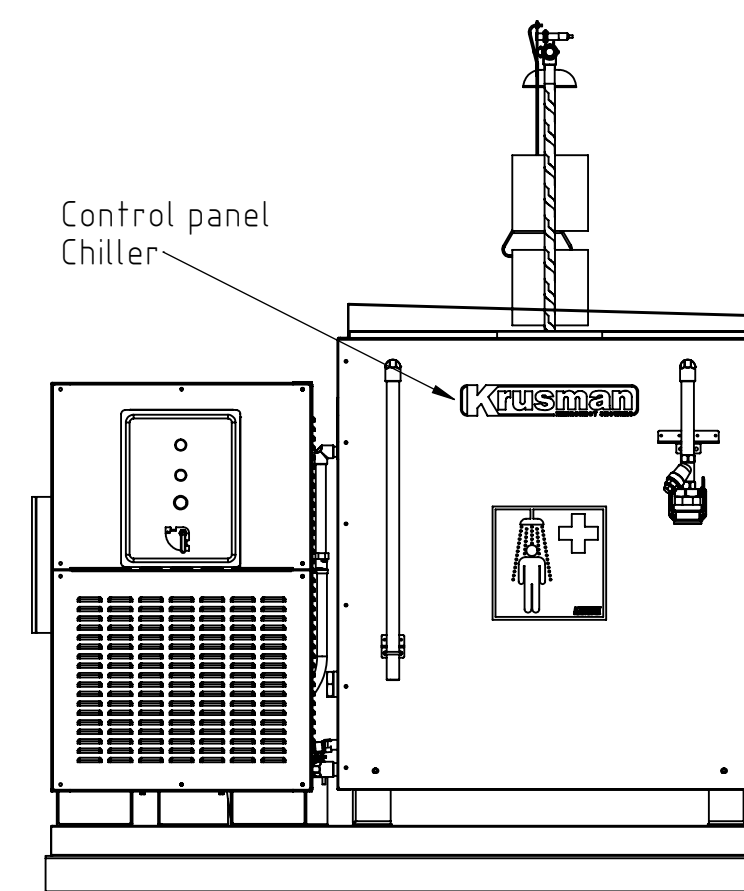
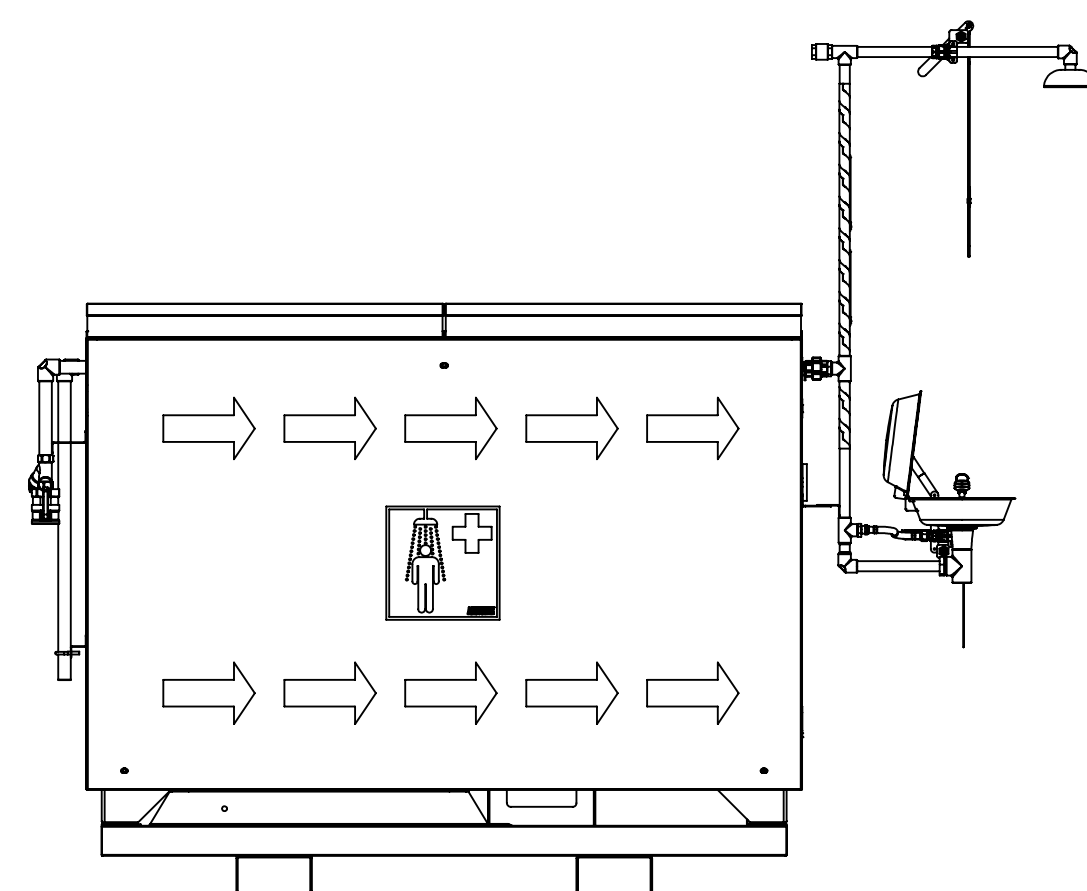
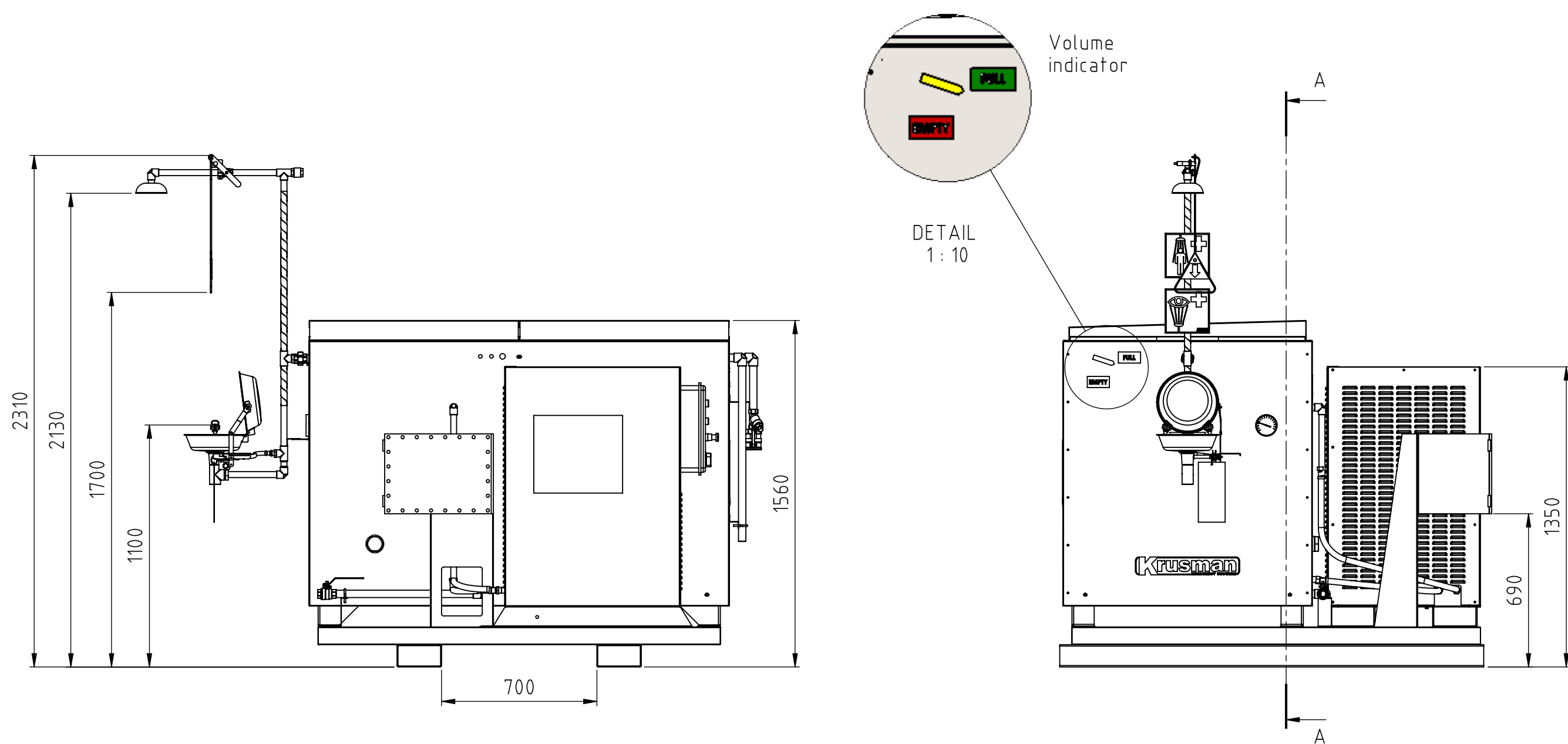
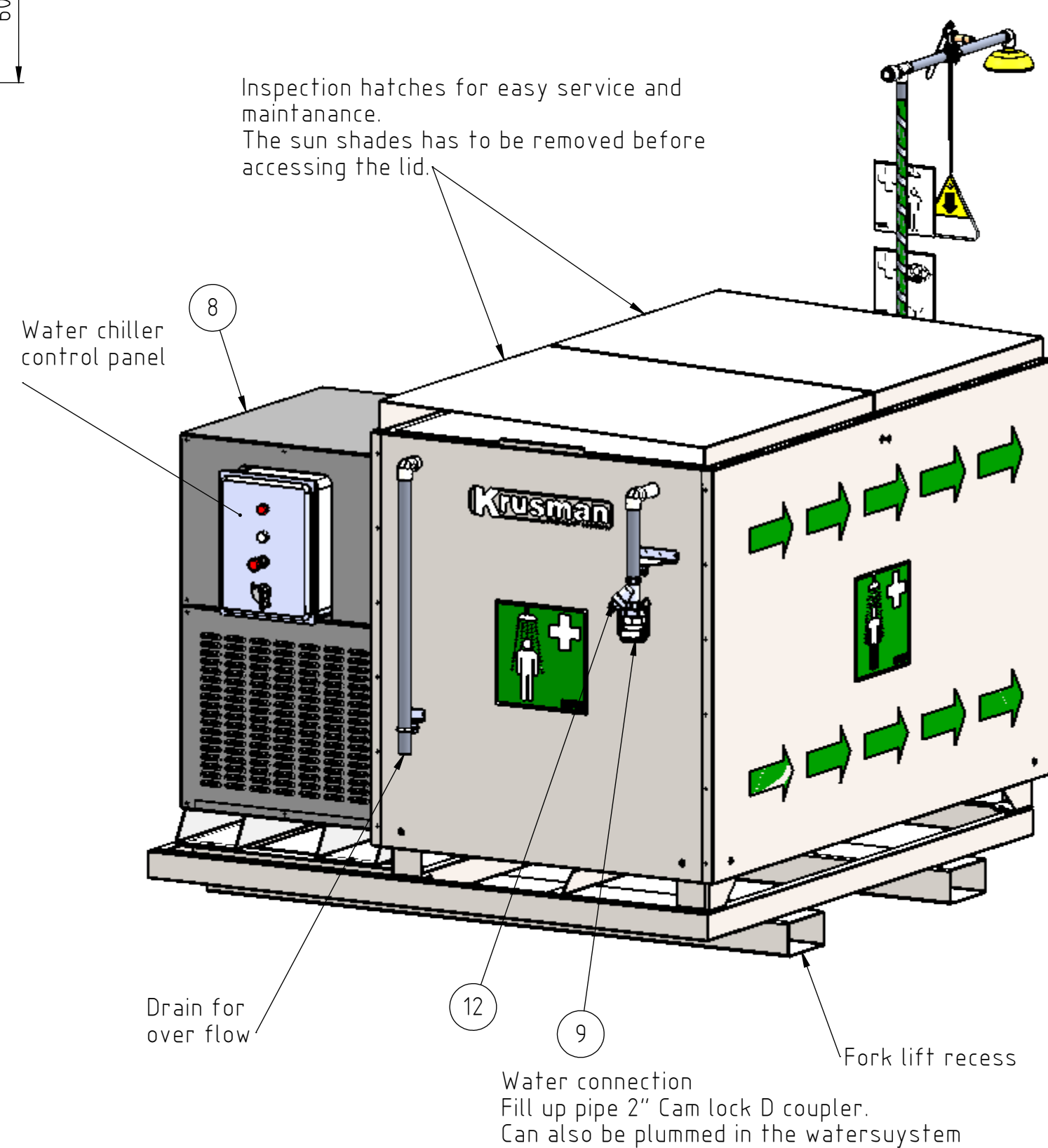


This document must not be copied without our written permission. It is the property of Krusman and is loaned to you for your use only. It is not to be used for any other purpose. Krusman will be prosecuted.



NOTES:
Emergency eyewash and shower is compliant according to ANSI Z358.1.
The electrical installation is EX compliant according to IEC.
The safety shower has to be unmounted during transport of the tank shower.
The water tank must be empty during transport



Technical data	
Emergency shower	76 lpm
Eyewash	14 lpm
Weight (empty)	approx. 750 kg
Weight operational	approx. 2500 kg
Tank and frame	Stainless- steel EN 1.4301
Safety shower	Stainless- steel EN 1.4404
Water chiller	Coated mild steel
Voltage	3 ph. 480VAC 60 Hz
Fuse	16A
Cooling duty	3 kW

13	1	AS0630 5/6/4 D 60Hz	Submerged pump EX 480V 60HZ	Stainless steel, coated cast iron
12	1	KNV628	Y- strainer, DN25	Stainless steel ASTM 316
11	1	KNDS49	Control card	Coated paper
10	1	KNV030	Thermometer	Zinc coated mild steel
9	1	Camlock 2" Female D33-D SS	Camlock coupler	Stainless steel ASTM 316
8	1	BHZ1-0030G111	Chiller, ATEX Cat2G IIB T3 (Zone 1), 3kW	Zinc coated mild steel
7	1	KNDS15-00	Ball valve DN 15 with push plate	Stainless steel 316
6	1	KNDS31	Shower head, 140mm, 76 lpm	Stainless steel 316L
5	1	KNDS32	Pull rod	Stainless steel 316L
4	2	KNDS06	Filter to spray head	Plastic
3	2	KNDS05	Spray head, eyewash	ABS Plastic
2	1	KNDS47	Emergency sign, emergency shower.	Phosphorescent plastic
1	1	KNDS45	Emergency sign, eye wash	Phosphorescent plastic

Order	Qty	Order number	Prepared by	MM	Description	Approved by	DK	Date	2019-02-15	Scale	1:20	Material	1	Sheet	1 (1)
-------	-----	--------------	-------------	----	-------------	-------------	----	------	------------	-------	------	----------	---	-------	-------

Krusman
EMERGENCY EQUIPMENT

Phone: +46-(0)21-14 92 00
Website: www.krusman.com

SEMI PORTABLE TANK SHOWER
7041 EX with water chiller
Installation drawing

Drawing No. R7041-EX Chiller
Rev. 1