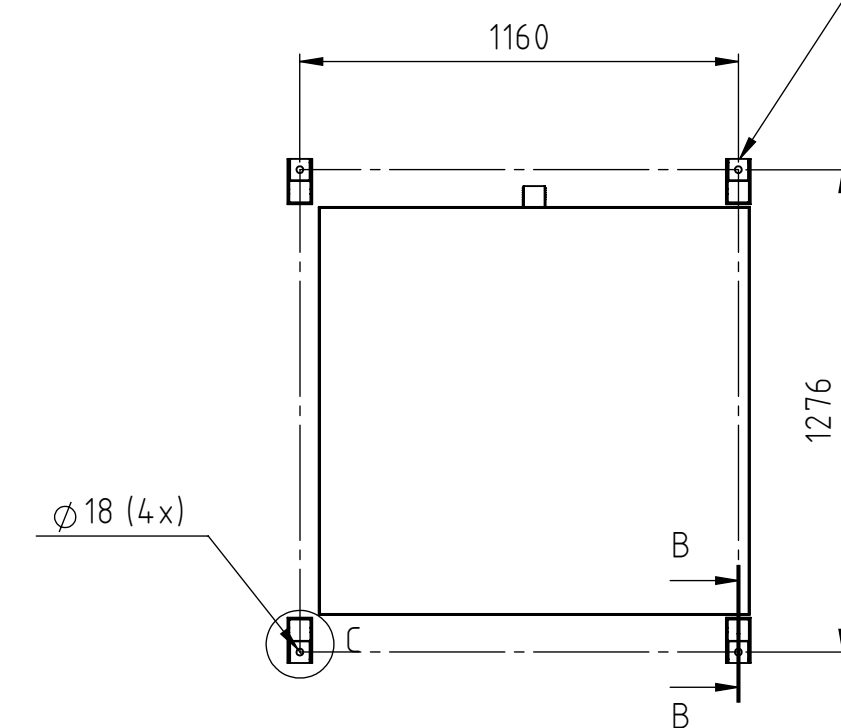


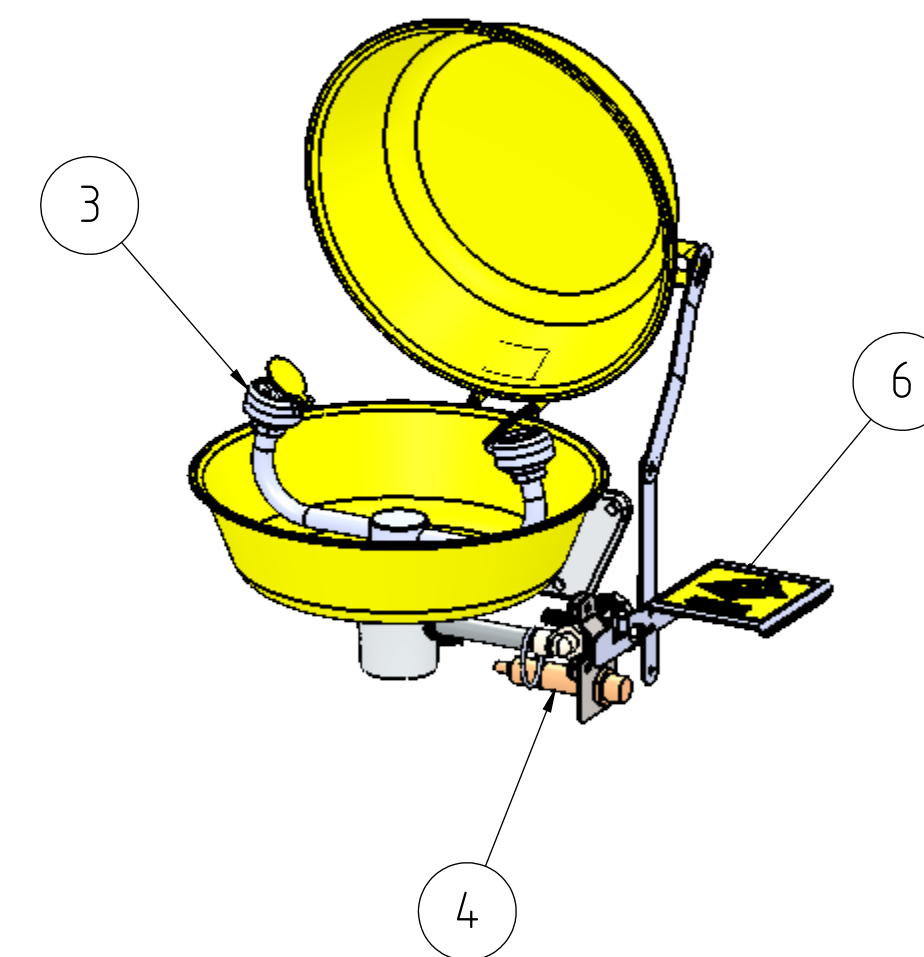
DETAIL D
Water level indicator
1:5

Eye wash unit protected with a dust cover. When the eye wash is activated the lid automatically will rise and give free access to the eye wash shower.

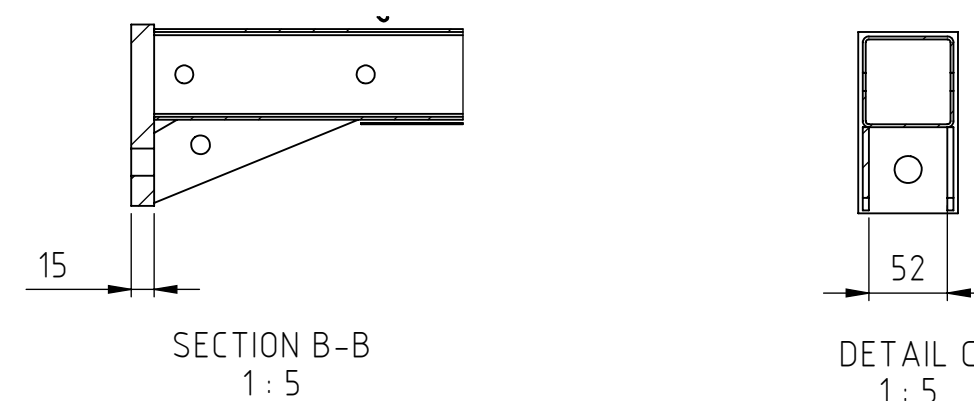
General information:
Temperature controlled and insulated tank shower.
Water volume 1400l.
The tank shower is manufactured of SS304.
The emergency shower is manufactured of SS316
Flashing beacon and horn will alarm when the the
emergency shower or eyewash station are activated.
Weight tank shower empty, Basic version 380kg.
Weight tank shower empty, with Options 520kg.



✓ All four feet need to have good support from the foundation before fixing. If there is a gap beneath any of the feet shimming is necessary. The feet have to be firmly secured to the foundation with anchor bolts.




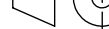
Eye wash unit with open dust cover



SECTION B-B
1:5

DETAIL C
1:5

17	1	KNV689	Junction box, Option
16	1	KNV616	Sun shade, Option
15	1	KNV662	PT 100 Temp sensor, Option
14	1	KNV691	Heating element, 2kW, Option
13	1	KNV603	Side panels, Option
12	1	KNV357	Chiller unit for tank shower, 3kW
11	1	HORN STANDARD	Siren 98 dB, IP65, 230V, Option
10	1	KNV687	Flashing beacon, Option
9	1	KND549	Control card
8	1	KNV030	Thermometer
7	1	KND530	Shower head 240mm, stainless steel
6	1	KND515-00	Ball valve DN15 with push plate
5	1	KND532	Pull rod, stainless steel
4	2	KNV691	Inductive sensors, Option
3	2	KND505	Spray head eyewash
2	1	7020-19 FOOT	Catchment basin with foot activation, Option
1	1	KND545	Emergency sign, eye wash

Pos	Qty	Order number	Description				
Owner:			Prepared by MM	Approved by DK	Date 2019-03-27	Scale 1:20	
Phone: +46-(0)21-14 92 00 Website: www.krusman.com		Title Tank shower 7011 Stainless steel 304, 1400L Installation drawing				Drawing No. R7011	
						Rev. 2	Sheet 1 (1)