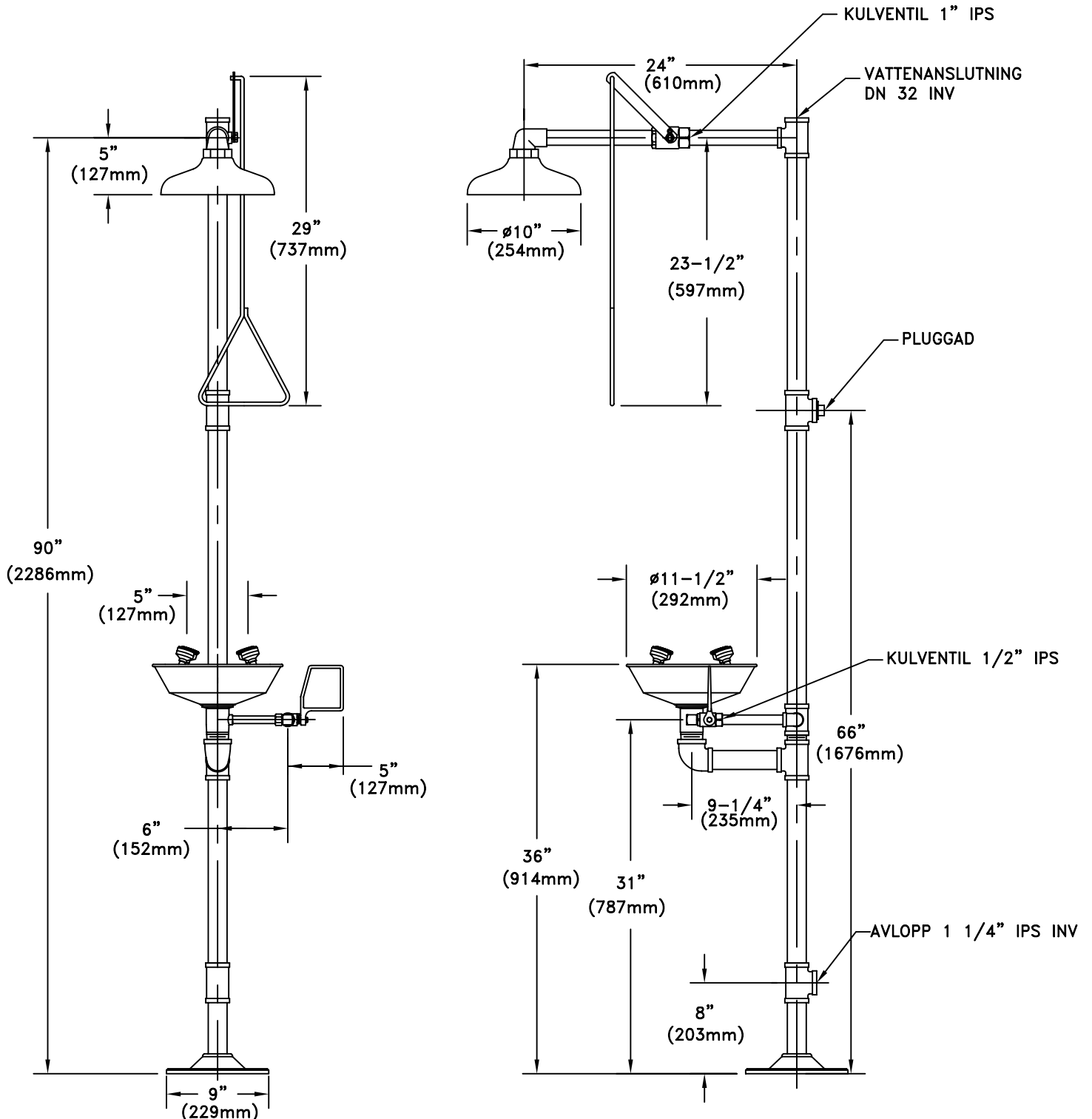


KN1909P

SAFETY STATION WITH STAY-OPEN SHOWER VALVE AND EYE/FACE WASH WITH ABS PLASTIC BOWL AND STAY-OPEN BALL VALVE



UNITS (EXCEPT THOSE WITH SELF-CLOSING VALVES) COMPLY WITH THE REQUIREMENTS OF ANSI Z358.1. TEST ALL EMERGENCY EQUIPMENT AT LEAST WEEKLY.