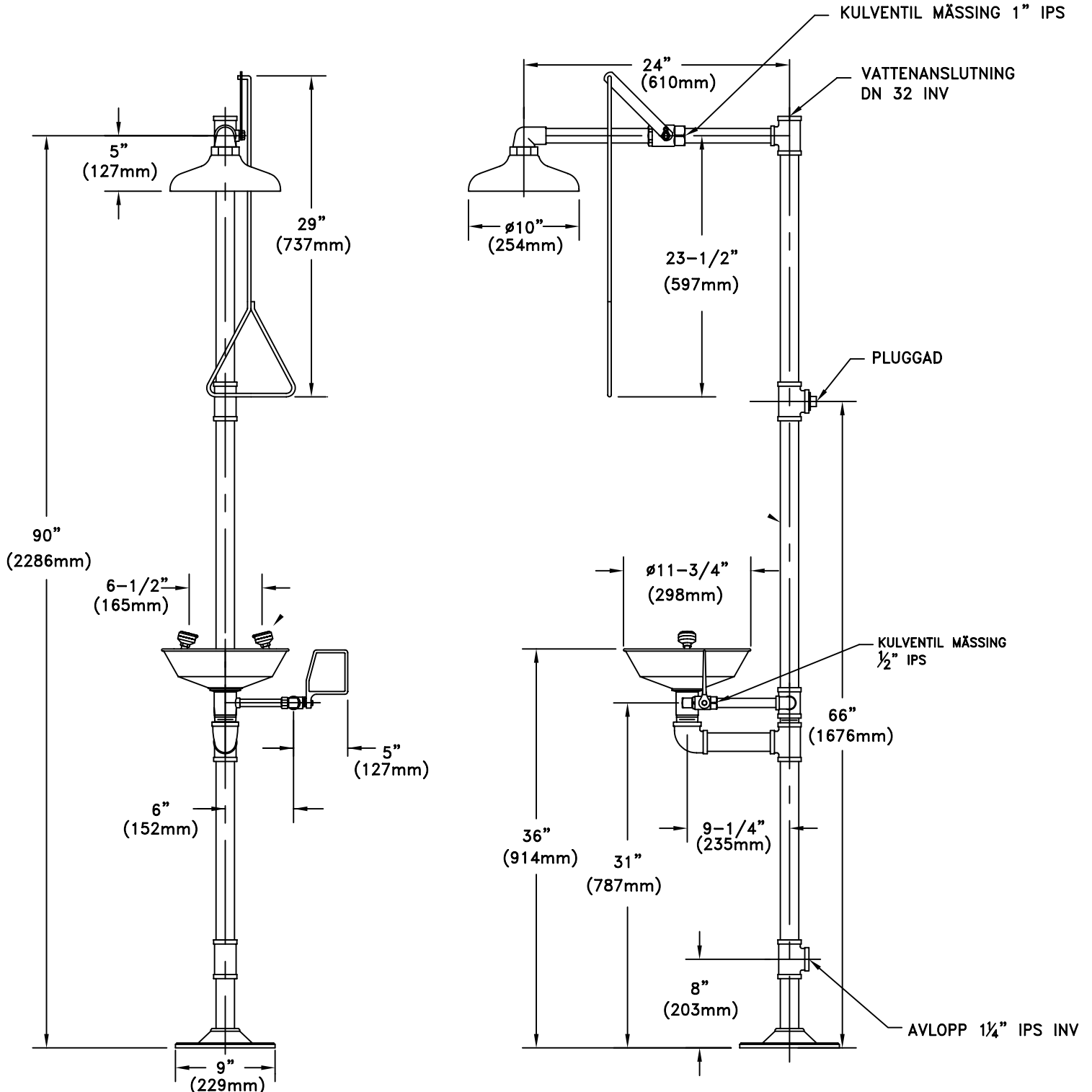


KN1902P

SAFETY STATION WITH STAY-OPEN SHOWER VALVE AND EYE WASH WITH ABS PLASTIC BOWL AND STAY-OPEN BALL VALVE



UNITS (EXCEPT THOSE WITH SELF-CLOSING VALVES) COMPLY WITH THE REQUIREMENTS OF ANSI Z358.1.

TEST ALL EMERGENCY EQUIPMENT AT LEAST WEEKLY.

Drawing Number: K401-021

Approved: _____

Revision Number: 082404-TPS